

FUJIFILM
Value from Innovation

FDR SE Lite

C35 | C43



Digital X-ray for Veterinary Practices

FDR SE Lite

Simplicity and Efficiency in X-ray imaging

FDR



- ▶ Instant Image Transfer
- ▶ Quick image check
- ▶ Simple workflow

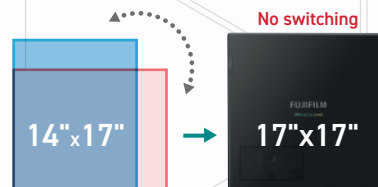
14 x 17



C43 (CsI detectors)

17"x17" format eliminates unnecessary handling

The large exposure area of a 17"x17" detector accommodates portrait and landscape without rotating it in the Bucky, minimizing handling and simplifying positioning.





Optimized X-ray image with advanced image processing technology

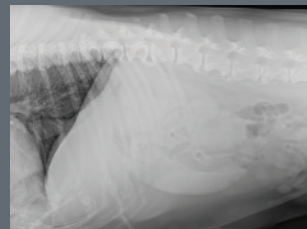
Advanced image processing provides high quality image with reduced impact for patients.

Virtual Grid • Optional

Virtual Grid intelligent image processing corrects for the effects of scatter radiation while retaining high contrast and sharpness. It improves patient comfort, simplifies positioning, and allows for as much as 50% lower dose compared to grid exams.



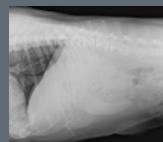
Virtual Grid



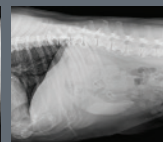
No Grid



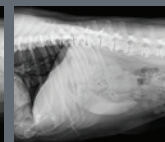
Virtual Grid



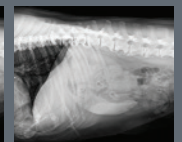
1 : 1



3 : 1



6 : 1



9 : 1

You can choose the optimum grid ratio for your examination needs.

It does not guarantee an equivalent effect to the actual grid.

Dynamic Visualization II • Optional



Conventional processing



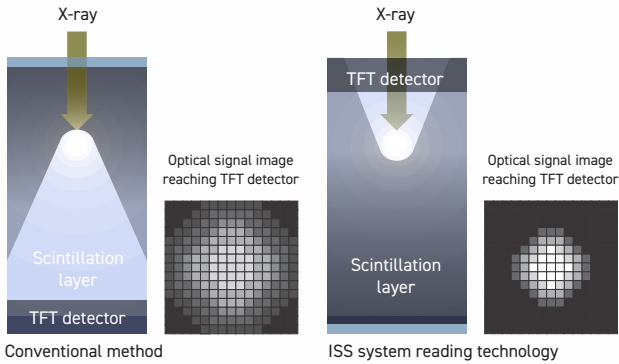
Dynamic Visualization II



Dynamic Visualization II

Advanced processing adjusts density and contrast display based on anatomic structure, hardware, and body thickness throughout the entire exposure field.

Irradiated Side Sampling (ISS)



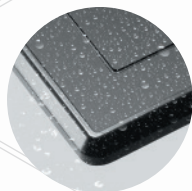
Equipped with Irradiated Side Sampling (ISS) technology, which positions its capture electronics (TFTs) at the irradiation side, in contrast to traditional detectors.

C35 (CsI detectors)

FUJIFILM
FDR SE Lite C35

IPX4 fluid resistance

Smooth, sealed design prevents infiltration of fluids, conforming to IPX4 fluid rating. Ensures reliability and safe protection from heavy cleaning and body fluid accidents.



Specifications



Product Name Model Name	FDR SE Lite C35 MARS1417XF-CSI	FDR SE Lite C43 MARS1717XF-CSI
Scintillator	CsI (Cesium Iodide) with Irradiated Side Sampling (ISS)	
Physical Specifications		
External Dimensions	18.1 x 15.1 x 0.6"	18.1 x 18.1 x 0.6"
Weight (approx., with battery)	7 lbs.	8.5 lbs.
Load Resistance	220 lbs. on a 1.6" diameter point, 330 lbs. distributed (a protective cover required for standing exams)	
Water Resistance	IPX4	
Image Acquisition		
Exposure Size: Inches / Pixels	14x17" / 2336 x 2836	17x17" / 2832 x 2836
Bit Depth, Pixel Pitch	16 bit, 150μ	
Grid Frequencies	40 lines/cm recommended; 40-44 lines/cm, 80+ lines/cm useable. Virtual Grid™ (option) simulates scatter clean-up for images acquired without a grid	
Connectivity		
Detector to FDR SE Console	Wireless only, up to 2 panels EIEE 802.11 a/b/g/n in 2.4 and 5GHz bands	
FDR SE Console to Network	LAN wired CAT5 Ethernet	
Battery and Power		
Battery Performance (Approx.)	1.7 - 3 hours	
Charge Time (approx.)	2.5 hours in battery charger 5 hours by trickle charge cord	
Power Supply	Battery, Power cord	
Environment and Power		
Temp., Humidity, Atmospheric Pressure	Operating: 41-86 °F, 10-80% R H (non-condensing), 700 -1,060 hPa Storage (without battery): -4-95 °F, 10-90% RH (nc), 700-1,060 hPa	
Power Consumption	Max 15W	Max 20W